



成都英维玻璃纤维有限公司

CHENGDU YINGWEI FIBERGLASS CO., LTD

## GLASS FIBER YARN FOR INDUSTRIAL USE

EC 13 -136\*1S/30

### EC 13 -136\*1S/30

Glass fiber yarn is categorized into: Single yarn & Plied yarn, in terms of manufacturing process;  
Starched-based, Silane-based & Starch-Silane based, in terms of sizing;  
Electronic Yarn and Industrial Yarn, in term of application;  
The diameter of this continuous glass fiber yarn is mainly 11-13um, and the yarn is coated with a special silane sizing agent, which has a good protection effect on the integrity of glass fiber. When the yarn is drawn and woven, it has less fuzz and excellent textile performance. After the yarn is woven, the sizing agent is easy to desize, the decomposition temperature is low, and the final ash residue is low. After desizing, the fabric is white and smooth. Yarn for industrial has high strength, less fuzz and good compatibility with epoxy and unsaturated polyester resins

### GLASS FIBER YARN PICTURES

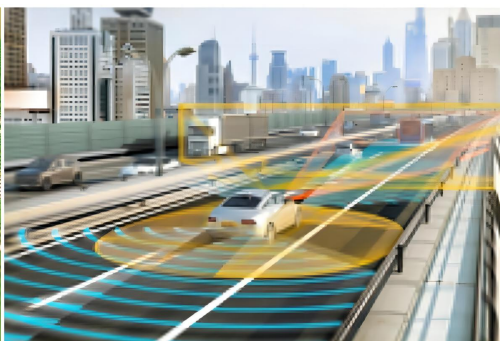
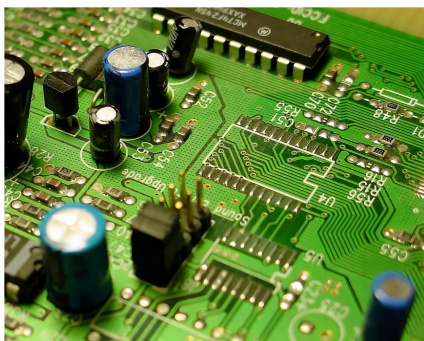


### EC 13 -136\*1S/30

The E-CR glass is environmentally friendly, corrosion resistant and with high mechanical properties.  
The linear density of the primary yarn is stable.  
Dedicated sizing and special silane system for reinforcement purpose.  
High tensile strength, good weaving performance and less fuzz.  
Good compatibility with unsaturated polyester (UP) resin, vinyl ester (VE) resin, phenolic resin and polyurethane (PU) resin system. Suitable for the production of fiber cloth and mesh.



## End-Use Markets



## PRODUCT DATA

### Nomenclature for Yarn Filament Diameter

Filament Diameter		Range of Average Filament Diameter	
British Units	International Units/microns	Microns	Inches/10-3
BC	4	3.60-4.40	0.14-0.17
C	4.5	4.41-5.07	0.171-0.190
D	5	5.08-6.32	0.2-0.249
DE	6	5.72-6.96	0.225-0.274
E	7	6.35-7.61	0.25-0.299
F	8	7.62-8.86	0.3-0.349
G	9	8.89-10.15	0.35-0.399
H	11	10.16-11.42	0.4-0.449
J	12	11.43-12.69	0.45-0.499
K	13	12.7-13.96	0.5-0.549

### Single Yarn

Type T.p.m	Inch-unit T.p.i	Sizing Type	Linear Density tex	Bobbin Type	Length m/bobbin	Net Weight kg/bobbin
EC 5 11 Z40	EC D450 1/0 1.0Z	Y5	11.2	2K	166000	1.86
EC 6 33 Z28	EC DE150 1/0 0.7Z	Y5,S508	33	4K	120000	3.96
EC 6 68 Z28	EC DE75 1/0 0.7Z	Y5,S508	68.7	4K/8K	53500/124000	3.68/8.52
EC 6 75 Z28	EC DE67 1/0 0.7Z	Y5,S508,R126	75	4K/8K	48500	3.64
EC 6 136 Z28	EC DE37 1/0 0.7Z	Y5,S508	136	4K/8K	27000/62000	3.67/8.43
EC 7 22.5 Z40	EC E225 1/0 1.0Z	Y3,Y5	22.5	4K	125000	2.81
EC 7 45 Z40	EC E110 1/0 1.0Z	Y3,Y5	45	4K	82000	3.69
EC 9 33 Z28	EC G150 1/0 1.0Z	Y1,Y5,R110,S508	33	4K	124000	4.09
EC 9 68 Z28	EC G75 1.0 0.7Z	Y1,Y4,Y102,R, R110,R117,S508	68.7	4K/8K	53500/124000	3.68/8.52
EC 9 75 Z28	EC G67 1/0 0.7Z	Y1,Y4	75	4K/8K	48500	3.64
EC 9 110 Z28	EC G45 1/0 0.7Z	Y1,R	110	4K/8K	34000/74000	3.74/8.14
EC 9 136 Z28	EC G37 1/0 0.7Z	Y1,R,R117	136	4K/8K	27000/62000	3.67/8.43
EC 9 204 Z20	EC G25 1/0 0.5	Y1,R,R117	204	4K	18000	3.67
EC 11 136 Z20	EC H37 1/0 0.5Z	Y1,R,R117	136	4K/8K	27000/62000	3.67/8.43
EC 11 204 Z20	EC H25 1/0 0.5Z	Y1,R,R117	204	4K	18000	3.67
EC 13 272 Z20	EC K18 1/0 0.6Z	Y1,R,R117	272	8K	31000	8.4



## Plied Yarn

Type t.p.m	Inch-unit t.p.i	Sizing Type	Linear Density tex	Bobbin Type	Length m/bobbin	Net Weight kg/bobbin
EC5 5×1×2 S168	EC D450 1/2 4.2S	Y5	22.4	4K	166000	3.72
EC6 33×1×2 S112	EC DE150 1/2 2.8S	Y5,S508	66	4K	60000	3.96
EC6 68×1×2 S112	EC DE75 1/2 2.8S	Y5,S508	137.4	4K	26700	3.67
EC6 75×1×2 S112	EC DE67 1/2 2.8S	R126	150	4K	24200	3.63
EC7 22×1×2 S112	EC E225 1/2 2.8S	Y5	45	4K	62000	2.79
EC9 33×1×2 S112	EC G 150 1/2 2.8Z	Y1	66	4K	60000	3.96
EC9 68×1×2 S112	EC G75 1/2 2.8Z	Y1,S508	137.4	4K/8K	26700/62000	3.67/8.52
EC9 136×1×2 S112	EC G37 1/2 2.8Z	Y1	272	4K	13500	3.67
EC9 136×1×3 S112	EC G37 1/3 2.8Z	Y1	408	4K	9000	3.67
EC9 136×1×4 S112	EC G37 1/4 2.8Z	Y1	544	4K	6750	3.67
EC9 136×1×5 S112	EC G37 1/5 2.8Z	Y1	680	4K	5400	3.67
EC9 136×1×6 S112	EC G37 1/6 2.8Z	Y1	816	4K	4500	3.67

## PACKING

Bobbin type	Layers	Pallet Size (mm)	Bobbin	Net Weight (kg)
B4	3	1120*1120*131	147	588
B8	3	1120*1120*131	75	600

## Storage

1.The product should be stored in cool and dry area. The recommended temperature range is in between 10-30°C with humidity in between 50 -75%. It should be protected from the weathering and moisture.

2.The product must be kept in its original package until the point of usage.

This data is offered solely as a guide for our customers and implied no liability on our part. The information contained in this data sheet is based on actual data supplied by an independent laboratory. We believe this information to be reliable, but do not guarantee its applicability to the user's process or assume any liability arising out of its use or performance. The user, by accepting these products, agrees to conduct its own testing and suitability for a particular use.

