



成都英维玻璃纤维有限公司

CHENGDU YINGWEI FIBERGLASS CO., LTD

E-FIBERGLASS YARN

EC G37 1/0 0.7Z

EC G37 1/0 0.7Z

E-Fiberglass Yarn is categorized into: Single yarn & Plied yarn, in terms of manufacturing process;
Starched-based, Silane-based & Starch-Silane based, in terms of sizing;

Electronic Yarn and Industrial Yarn, in term of application;
The diameter of this continuous glass fiber yarn is mainly $9\mu\text{m}$, and the yarn is coated with a special silane sizing agent, which has a good protection effect on the integrity of glass fiber. When the yarn is drawn and woven, it has less fuzz and excellent textile performance. After the yarn is woven, the sizing agent is easy to desize, the decomposition temperature is low, and the final ash residue is low. After desizing, the fabric is white and smooth. Yarn for industrial has high strength, less fuzz and good compatibility with epoxy and unsaturated polyester resins

E-FIBERGLASS YARN PICTURES



EC G37 1/0 0.7Z

The E-CR glass is environmentally friendly, corrosion resistant and with high mechanical properties.

The linear density of the primary yarn is stable.

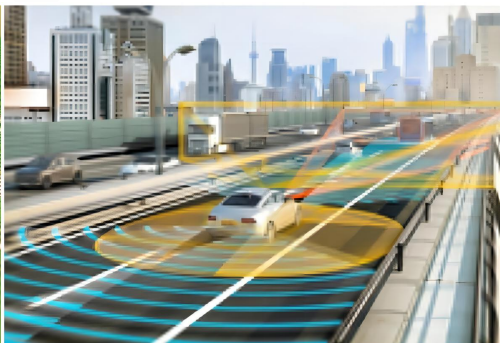
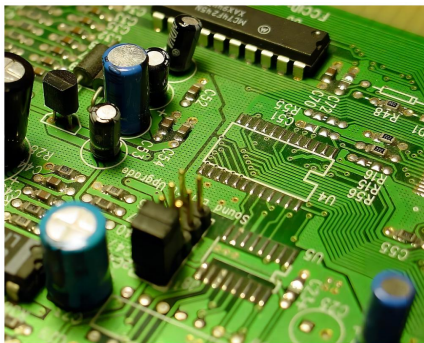
Dedicated sizing and special silane system for reinforcement purpose.

High tensile strength, good weaving performance and less fuzz.

Good compatibility with unsaturated polyester (UP) resin, vinyl ester (VE) resin, phenolic resin and polyurethane (PU) resin system. Suitable for the production of fiber cloth and mesh.



End-Use Markets



PRODUCT DATA

Form 1: Sizing Type and LOI Normal Value:

Sizing Type	S12			
LOI Normal Value %	1.10			

Form 2:Control Index:

Specification	Control Index	Test	
		GB	ISO
Appearance	White color, no contamination		
Glass Type	E-Glass, Alkali Content<0.8%	GB/T 1549	
Bobbin Type	B8		
Filament, Φ (μm), ± 1	9	GB/T 7690.5	ISO 1888
Yarn Count[Tex(G/km)]	136.0 \pm 4.0	GB/T 7690.1	ISO 1889
Yarn Twist [T/m], Z	28.0 \pm 4.0	GB/T 7690.2	ISO 1890
Tensile Strength (cN/Tex)	≥ 50	GB/T 7690.3	ISO 3341
Combustible Content (%)	Nominal value \pm 0.20	GB/T 9914.2	ISO 1887
Moisture Content (%)	≤ 0.15	GB/T 9914.1	ISO 3344
Length (M/Bobbin)	62600		
Net Weight (kg/bobbin)	A1: 8.51 A2: ≥ 4.55		
Packing	A1	Two layers: 66 bobbins per pallet. (562kg/pallet)	
	A2	Two layers: 66 bobbins per pallet.	

Storage

1.The product should be stored in cool and dry area. The recommended temperature range is in between 10-30°C with humidity in between 50 -75%. It should be protected from the weathering and moisture.

2.The product must be kept in its original package until the point of usage.

This data is offered solely as a guide for our customers and implied no liability on our part. The information contained in this data sheet is based on actual data supplied by an independent laboratory. We believe this information to be reliable, but do not guarantee its applicability to the user's process or assume any liability arising out of its use or performance. The user, by accepting these products, agrees to conduct its own testing and suitability for a particular use.

